

QUILTED BAG



Thread

1x Chain Strap
1x 9" Metal Zip
1x Magnetic Clasp

0.5m Organza

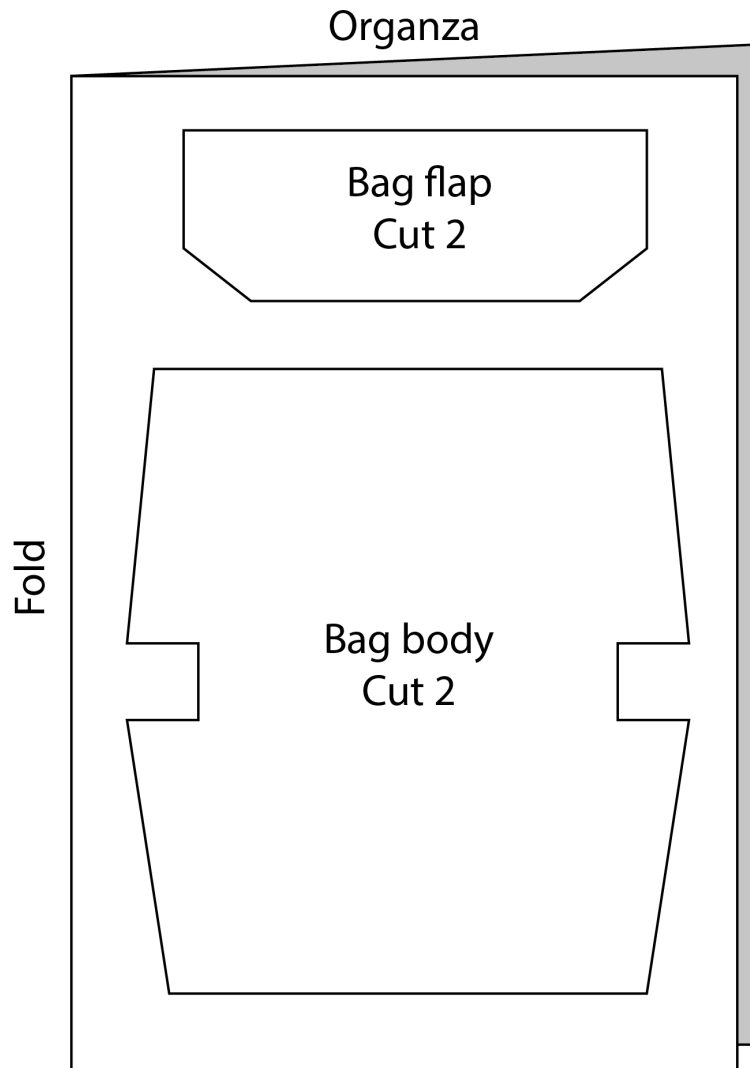
10cm Narrow Ribbon

Assorted Fabric Scraps

CUTTING PLAN

Seam allowance is 1cm unless otherwise noted.

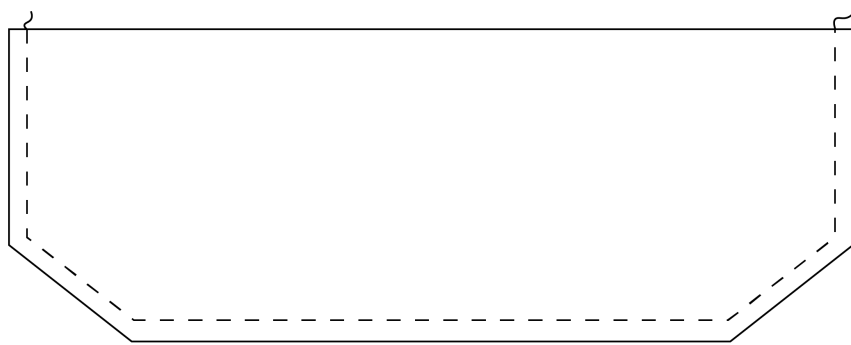
When cutting please try to be mindful of fabric wastage and place pattern pieces to leave as little scrap fabric as possible.



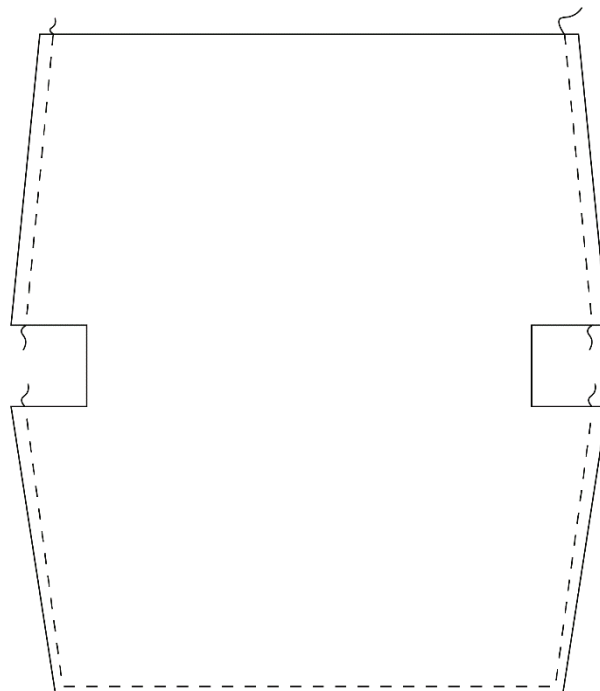
The shaded part of the illustrations indicates the wrong side of the fabric. Using the cutting plan above cut out 1 pair of bag flaps and 1 pair of bag body pieces from the organza.

PREPARING SCRAPS & BAG PIECES

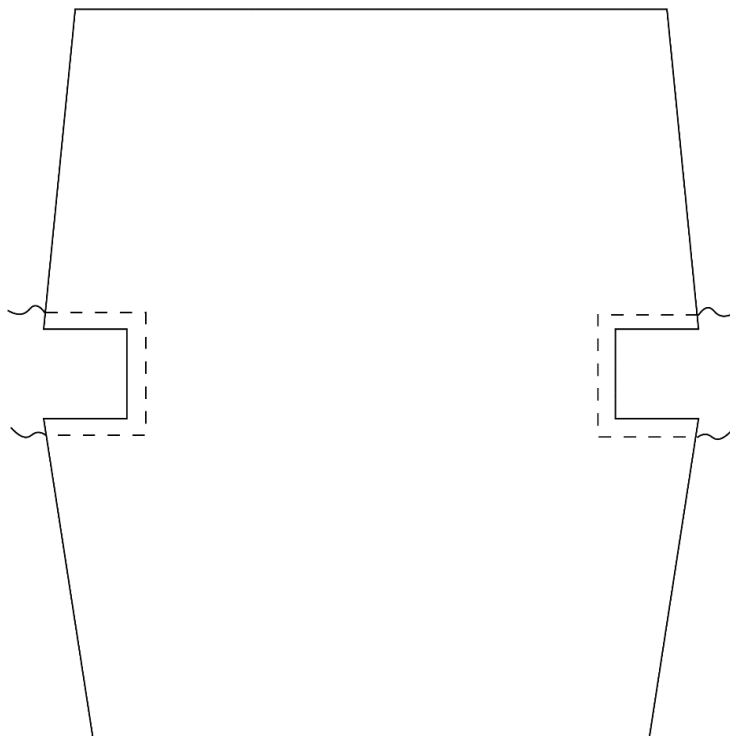
1. Take your chosen fabric scraps and use your rotary cutter and cutting mat to randomly 'shred' them into a confetti of uneven pieces approximately 1.5-2cm in diameter. Mix them up to create a nice blend of colours.
2. Right sides together sew the bottom and side edges of the bag flap. Leave the top edge open. Trim/clip the corners as necessary. Turn right side out and press.



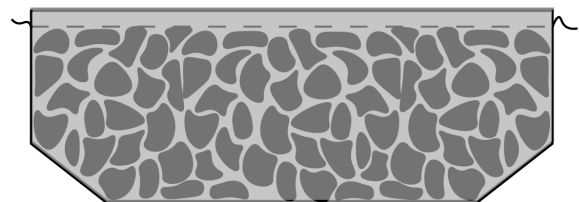
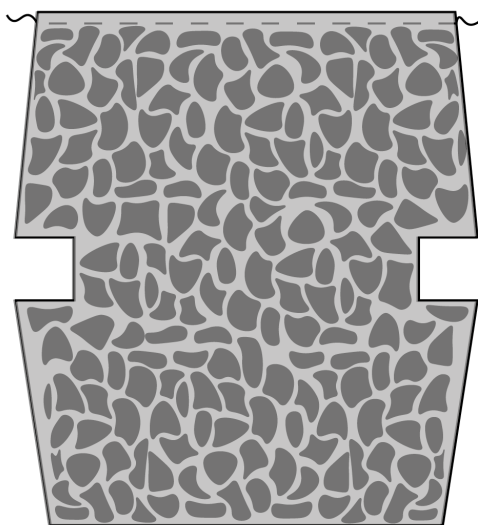
3. Right sides together sew the side and bottom edges of the bag body as illustrated. Leave the top edge open and middle sections open. Trim/clip the corners as necessary, turn right side out and press.



4. Baste together the gaps at the side as illustrated.



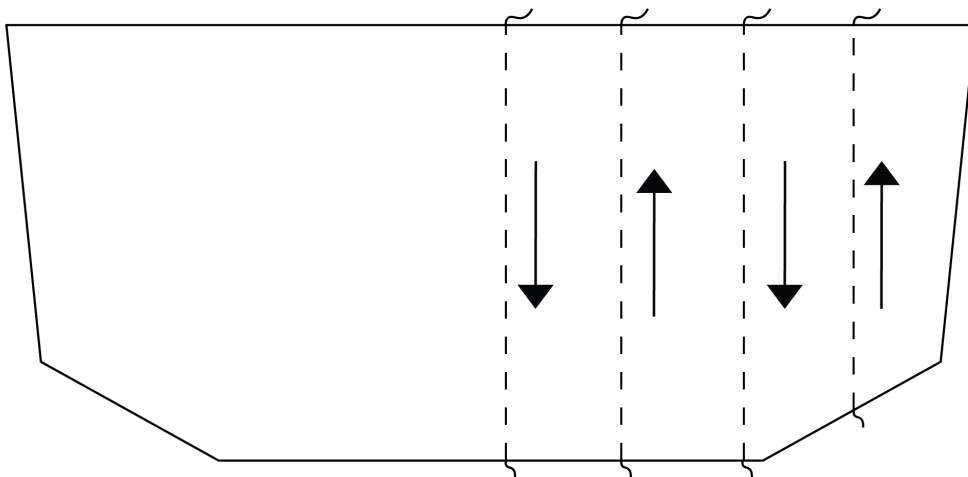
5. Stuff the both the flap and bag body with your scraps. The scraps should fully cover the organza with no gaps but be careful not to make it too thick as it will be difficult to sew through later, particularly around the edges of the bag piece. You may find you need to shred more scraps at this point. Using a 1cm seam allowance baste the open edges closed.



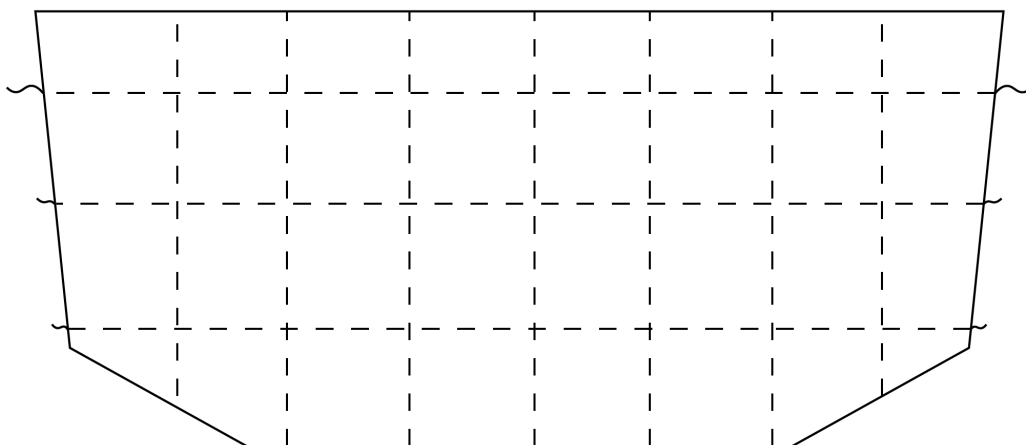
QUILTING

6. Set up your machine for quilting by attaching the extension table and walking foot.

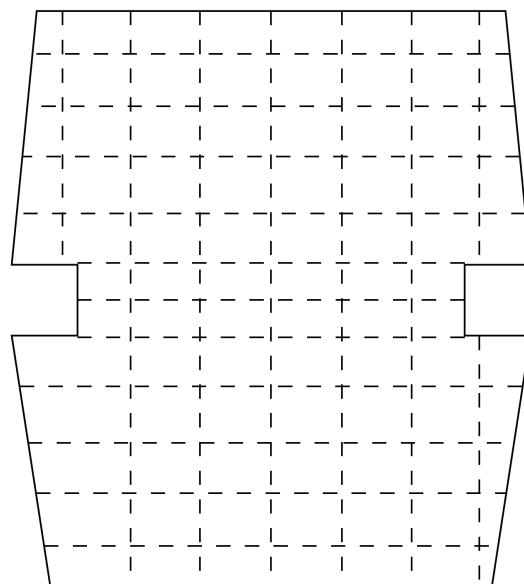
7. Take your stuffed bag flap. Mark and sew a vertical line down the centre of the flap. The next line of stitching should be parallel to the first, 3cm away. Sew this line in the opposite direction to your first. Continue to alternate the direction of stitching as you work your way across the flap to the edge, leaving 3cm between each line of stitching. When you reach the edge go back to the centre and work your way to the other side.



8. Once you have sewn all the vertical lines sew horizontal lines in the same manner to create a grid. Start your first line 3cm from the bottom edge of the flap this time.

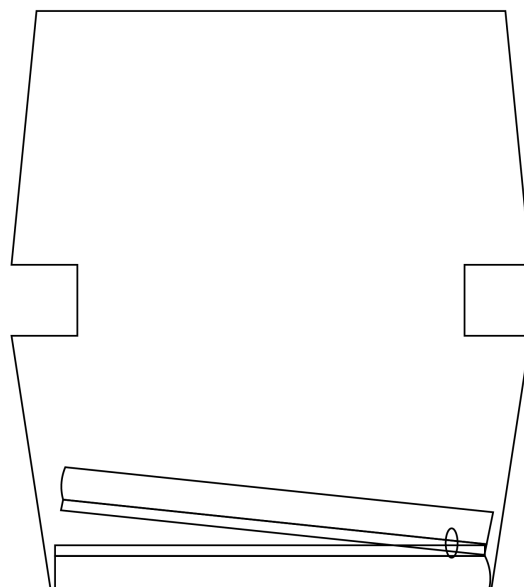


9. Repeat steps 6 and 7 for the stuffed bag body.

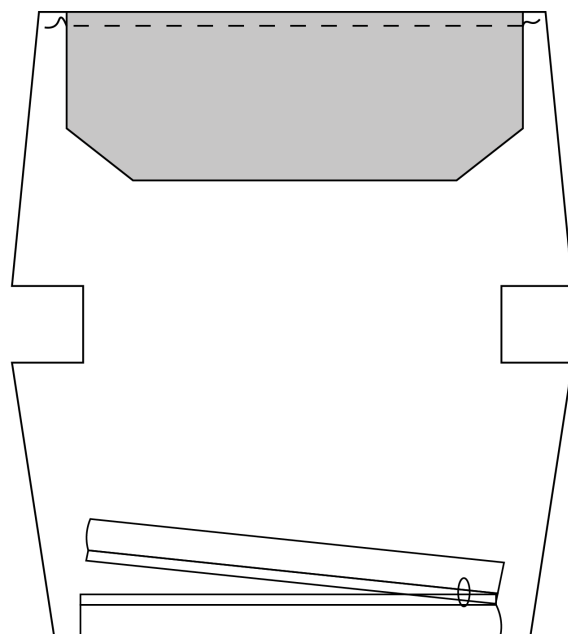


ZIP

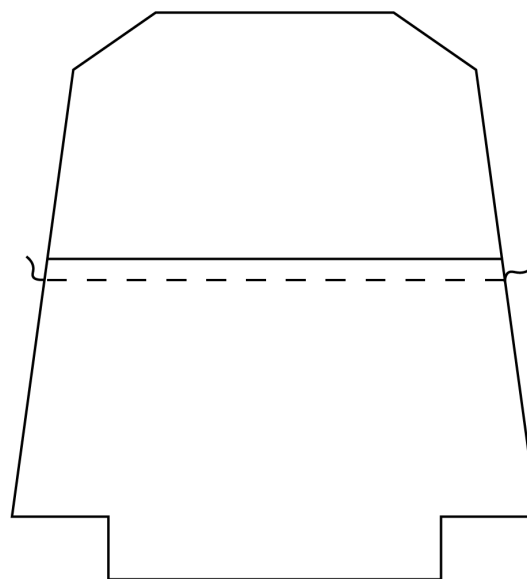
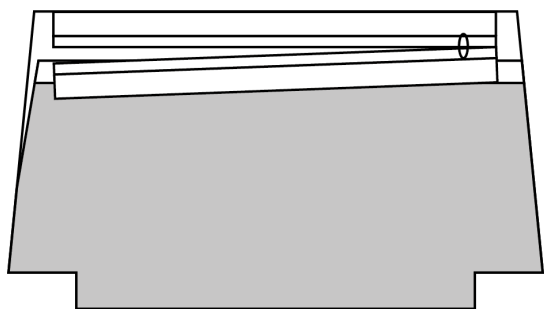
10. Decide on the right and wrong side of your bag flap and body. Pin one side of zipper tape (right sides together) centred along the finished edge of the bag body as illustrated. Stitch. Turn the zip to the wrong side and top stitch in place.



11. Right sides together lay the bag flap piece centred and in line with the basted edge of the bag body, raw edges aligned. Baste together on top of previous basting stitch.

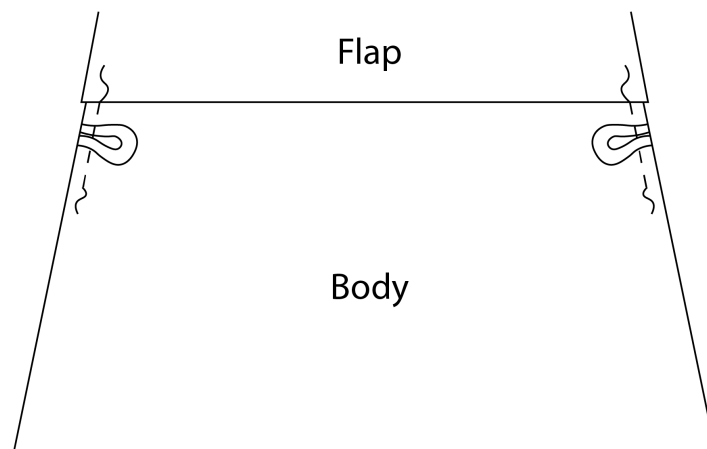


12. Bring the bottom edge of the bag body up to meet the top. Lay the free edge of the zip tape right side down against the wrong side of the bag flap. Centre it along this edge and stitch into place. Turn right side out and topstitch through the body of the bag and zip tape, making sure to leave the bag flap free of the stitching.



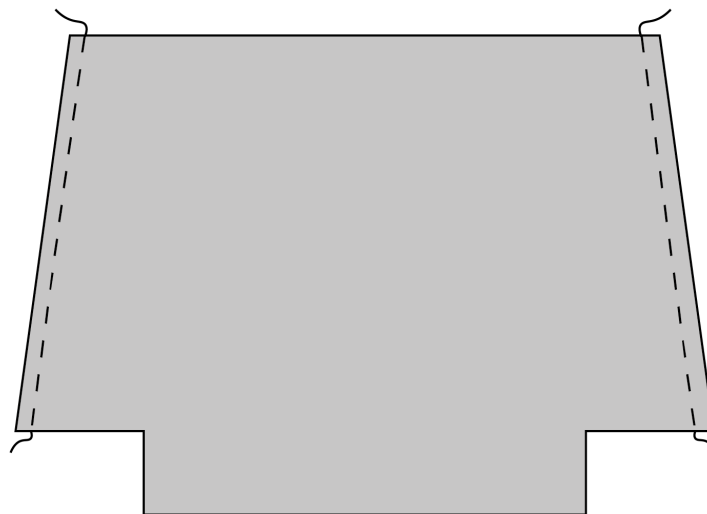
ASSEMBLING THE BAG

13. Cut 2x 5cm pieces of narrow ribbon. Fold one piece of ribbon in half to create a loop. Pin into place 0.5cm below the flap seam at the side seam, on the right side of the bag. The loop should be facing in towards the body of the bag and the ends should align with the raw edge. Baste into place. Repeat for the second piece of ribbon on the other side seam.

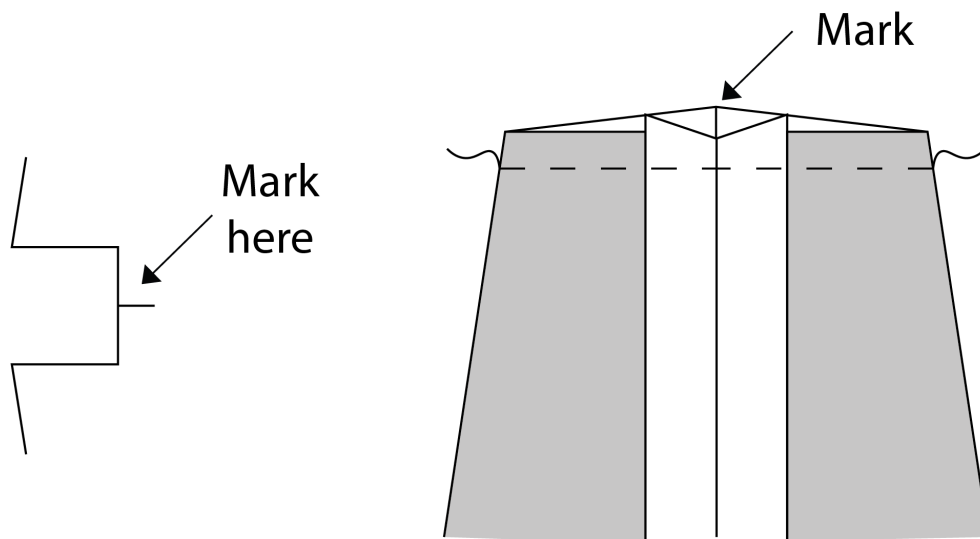


14. With the zip unzipped part way, turn the bag wrong side out.

15. Right sides together, align and pin side seams. Stitch with a 1cm seam allowance, making sure not to catch the flap in the stitching. Repeat for second side seam.



16. Mark the central point of the base of the bag on both sides as illustrated. Open out the seam allowances of the side seams and match the seam line with the point you have just marked. Pin and stitch these edges together with a 1cm seam allowance to create the corners of your bag.



FINISHING

17. Turn the bag right side out. Hand sew the magnetic clasp onto the bag. Position the male side of the clasp on the front of the bag body, so the top edge is 5cm down from the zip. The female side of the clasp needs to be positioned on the underside of the flap in the correct spot to enable the flap to sit flat and straight.

18. Clip your chain strap onto the loops of ribbon and your bag is finished!